



# AGROTIKOS SMART STORE INDIA

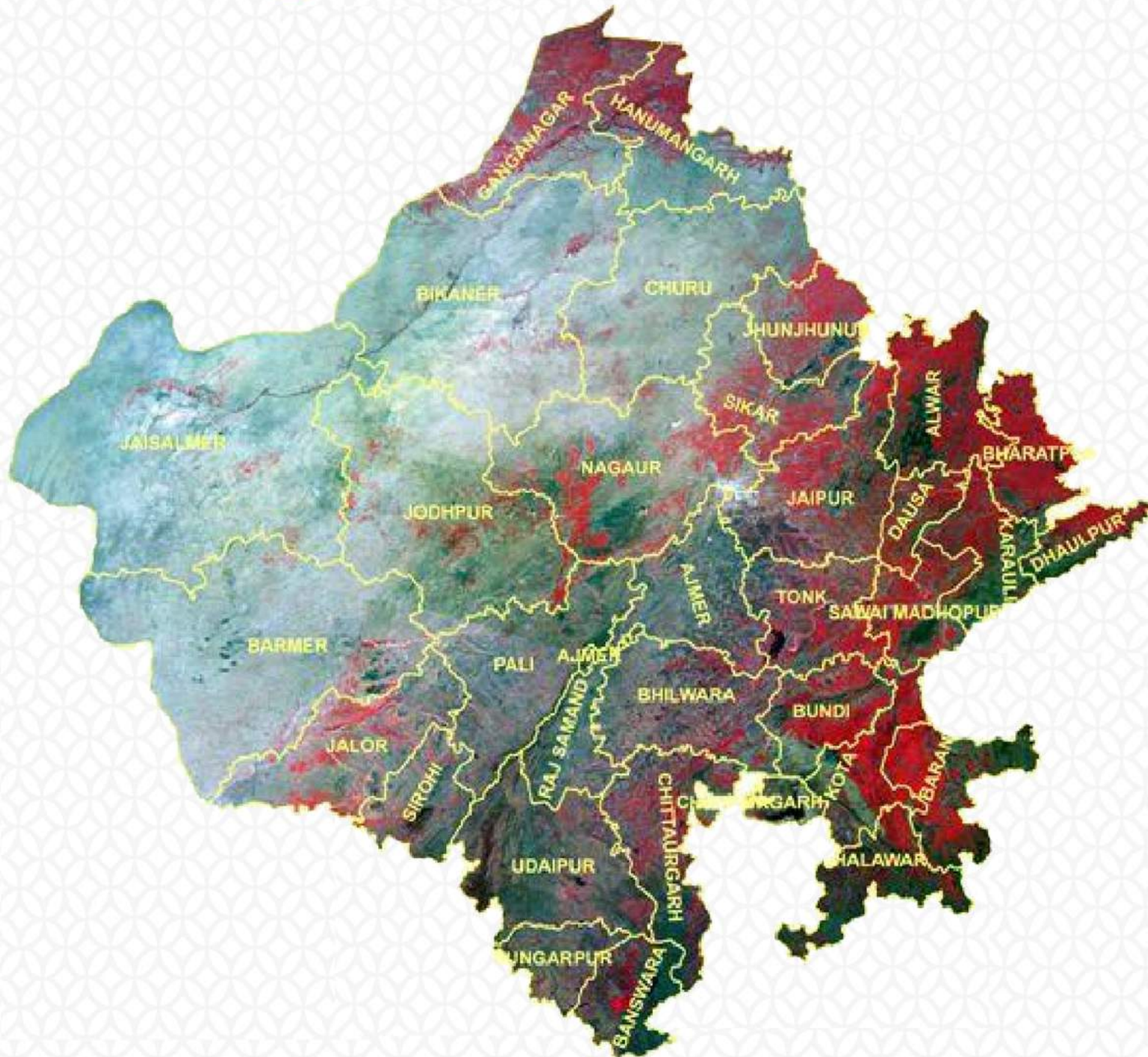


# Agrotikos Smart Store India

FITMENT CATALOGUE

Land of Maharajas

# Rajasthan



Rajasthan which is also known as the “Land of Maharajas” is the largest state of India, covering an area of about 342,239 sq. km. It comprises of 33 districts and its largest city is Jaipur, which is also its capital. Being located on the western side of the country, it shares its border with Pakistan to its northwest and to the west it shares its border with Sindh. To its north it has Punjab, Uttar Pradesh and Haryana to its northeast; to its southeast it has Madhya Pradesh and Gujarat to its southwest.

The glory of the state is retained by its majestic palaces, forts and monuments. The vibrant culture and rich heritage of this princely state draw innumerable tourists from across the globe.

# Why **Agrotikos** Smart Store India

It's an inclusive retail project, which is not only going to benefit Consumers, by providing a wide range of daily need superior quality products at reasonable prices but also providing a golden opportunity to Haryana Domicile to become a franchise partner with Zero franchise fee and low investment. This project is also providing a platform to Govt. Co-operatives/ organizations, Self Help Groups (SHGs), Farmer Producer Organizations (FPOs), Regional, National, International food & FMCG brands, startups, and Rajasthan-based MSMEs to sell their products in **Agrotikos** Retail Stores

## Key Benefits for



### FMCG Partners

Government Initiative  
in Retail Sector

New Market  
Development in  
rural areas

Enhancing Manufacturing  
Capabilities

Large platform for  
existing & new products

Multifold benefits for  
employment generation &  
new business possibilities



### Customers

Modern Retail  
Shopping experience

Convenient & Hassle  
free shopping

Wide range of products  
under a single roof

Best Quality Products  
at Reasonable Prices

Timely attractive offers  
discount vouchers &  
other schemes.



### Franchisee Partner

Zero Franchise fee  
& low investment

#### Average 10% Margin

10% margin if share of national brands to  
overall sales mix 40%

8% - 10% margin if share of national brands to  
overall sales mix 60%

Mudra Loan  
Support

Infrastructure assistance,  
Marketing, Brand building,  
IT Support & Training  
for opening the retail store

Door Step  
Delivery at Store

# STORE FITMENT ELEMENTS



# STORE FITMENT ELEMENTS

## WALL RACK



### PRODUCT DESCRIPTION

Wall Display Racks size  
W 3'-0" x H 7'-0

## GONDOLA RACK



### PRODUCT DESCRIPTION

Display Racks size  
W 3'-0" x H 5'-0"  
X D 3'-0 "

## WALL MOUNTED RACK



### PRODUCT DESCRIPTION

Wall mounted Display Racks size W 3'-0" x H 7'-0"

# STORE FITMENT ELEMENTS

## CASH COUNTER



### PRODUCT DESCRIPTION

Structure in MS,  
2 no of drawers  
with 1-inch prelam  
wooden top.

## CHAIR



### PRODUCT DESCRIPTION

Aluminum  
Ladder 4 feet

## WALL MOUNTED RACK



### PRODUCT DESCRIPTION

Multiuse shopping plastic basket  
for super mart of standard size

# STORE FITMENT ELEMENTS

## ROLLING SHUTTER



### PRODUCT DESCRIPTION

MS rolling shutter in 0.8mm sheet with all hardware, fitting & lock

## SHELF



### PRODUCT DESCRIPTION

Shelve Rack with size of 12/15 inch

## GLOW SIGNBOARD



### PRODUCT DESCRIPTION

Lit Flex signage size 9\*3 ft

# STORE FITMENT ELEMENTS

## SLOT WALL



### PRODUCT DESCRIPTION

Slot Wall  
size of  
W 4'-0" x H 4'-0

## PERFORATED WALL



### PRODUCT DESCRIPTION

Perforated Wall  
size of  
W 4'-0" x H 4'-0



S.No	Elements	Description / Specification	New Rate inclusive Tax
1	SKUs Display Rack	1.1 Supply and Fabrication of Modular Display Racks size W 2'-0" x H 7'-0" and with structure in with shelves of 20 Gauge MS (0.9 mm thickness), Channel of 14 Gauge, Bracket 12 Gauge, Backsheet 22 Gauge@ 15 inch depth -3 no., 12 inch depth – 3 nos.	5480
	SKUs Display Rack	1.2 Supply and Fabrication of Modular Display Racks size W 3'-0" x H 7'-0" and with structure in with shelves of 20 Gauge MS (0.9 mm thickness), Channel of 14 Gauge, Bracket 12 Gauge, Backsheet 22 Gauge @ 15 inch depth -3 no.,12 inch depth – 3 nos.	6310
2	SKUs Display Rack	2.1 Supply and Fabrication of Modular Display Racks size W 2'-0" x H 6'-0" and with structure in with shelves of 20 Gauge MS (0.9 mm thickness), Channel of 14 Gauge, Bracket 12 Gauge, Backsheet 22 Gauge@ 15 inch depth -3 no., 12 inch depth – 2 nos.	5093
	SKUs Display Rack	2.2 Supply and Fabrication of Modular Display Racks size W 3'-0" x H 6'-0" and with structure in with shelves of 20 Gauge MS (0.9 mm thickness), Channel of 14 Gauge, Bracket 12 Gauge, Backsheet 22 Gauge @ 15 inch depth -3 no.,12 inch depth – 2nos.	5619
3	Wall Mounted Display Rack	3.1 Supply and Fabrication of Modular Display Racks size W 2'-0" x H 7'-0" and with structure in with shelves of 20 Gauge MS (0.9 mm thickness), Channel of 14 Gauge, Bracket 12 Gauge, @ 15 inch depth - 3no., 12 inch depth – 3 nos.	4194
	Wall Mounted Display Rack	3.2 Supply and Fabrication of Modular Display Racks size W 3'-0" x H 7'-0" and with structure in with shelves of 20 Gauge MS (0.9 mm thickness), Channel of 14 Gauge, Bracket 12 Gauge, @ 15 inch depth -3 no.,12 inch depth – 3 nos	5284
	Wall Mounted Display Rack	3.3 Supply and Fabrication of Modular Display Racks size W 2'-0" x H 6'-0" and with structure in with shelves of 20 Gauge MS (0.9 mm thickness), Channel of 14 Gauge, Bracket 12 Gauge, @ 15 inch depth - 3no., 12 inch depth – 2 nos.	3806
	Wall Mounted Display Rack	3.4 Supply and Fabrication of Modular Display Racks size W 3'-0" x H 6'-0" and with structure in with shelves of 20 Gauge MS (0.9 mm thickness), Channel of 14 Gauge, Bracket 12 Gauge, @ 15 inch depth -3 no.,12 inch depth – 2nos	4786
4	Display Central Rack- Gondola	Supply and Fabrication of Modular Display Racks size W 3'-0" x H 5'-0" X D 3'-0 " with taper on both sides of 0.9 mm and with structure in with shelves of 20 Gauge MS, Channel of 14 Gauge, Bracket 12 Gauge, Backsheet 22 Gauge, 15 inch depth for each shelves @15 inch depth -3 no, 12 inch depth -2 nos.both side	8857
5	Counter Desk	5.1 Desk specification with W 1'-8 X H 3'-0" X L 3'-4"structure in MS, 2-3 number of drawers with 1-inch prelam wooden top	7528
	Counter Desk	5.2 Desk specification with W 1'-8 X H 3'-0" X L 2'-, 1 number of drawer	6089
	Counter Desk	5.3 Desk specification with L 5'-0" X W 4'-0" X H 3'-0"structure in MS, Top in Aluminium and Plastic having SS Sheet on Top and with wooden drawer.	22142
6	Chair	Standard MS chair with Cushion	692
7	Ladder	Aluminum Ladder 4 feet	2768
8	Shopping Basket	Multiuse shopping plastic basket for super mart of standard size	277
9	Rolling Shutter	MS rolling shutter in 0.8mm sheet with all hardware, fitting & lock	432
10	Shelf Rack	10.1 Shelve Rack with size of 12 inch	482
		10.2 Shelve Rack with size of 15 inch	570
11	Signage- Opt. 1	11.1 ACP signage size – 3mm laser cut Non-Lit acrylic letters as per approved design, 3mm ACP sheet, with MS frame structure. Lighting with Led modules asper required quantity	537
	Signage- Opt. 2	11.2 Lit Flex signage size - Flex Printing and installation on MS Frame structure. Specs: 1 "or 3/4" square pipe frame double structure, Precoated 22 swg GI sheet on sides and 26 swg GI sheet at back.Single site printing @Alluminium L Channel Edge lit.	376
	Signage- Opt. 3	11.3 Lit Flex signage size - Flex Printing and installation on MS Frame structure. Specs: 1 "or 3/4" square pipe frame double structure, Precoated 22 swg GI sheet on sides and 26 swg GI sheet at back Single site printing @Back lit	295
	Signage- Opt. 4	11.4 Non-Lit Flex signage size - Flex Printing and installation on MS frame structure. Spec: 1 "or 3/4"square pipe	91
12	Wall Mounted Storage Shelf	12.1 Perforated wall size of W 4'-0" x H 4 '-0"	3100
		12.2 Slot wall size of W 4'-0" x H 4 '-0"	3100

## Term and conditions:

- ASSIPL will ensure that all payments are released by franchisee. ASSIPL will take demand draft from franchisee before the commencement of work by selected vendor. ASSIPL will hand over the DD to vendor within 7 days after the successful completion of the work.
- The vendor shall conduct a site reeve and provide a cost estimate of the work to the Franchisee and ASSIPL
- The empanelled vendor shall finish installation of required interiors fixtures and ensure store readiness in two weeks.
- The transportation cost of the fit-out materials to the franchisee store shall be borne by the franchisee partner and it will be as per actuals.  
All wear and tear and its maintenance of fitment will be covered under defect liability period. The defect liability period will be for one year post the installation. However, any damage by franchisee will not be covered in defect liability period.  
The vendor will also assist in maintenance of the fit-out materials. The maintenance period will be 4 years from completion of defect liability period. The vendor will provide maintenance to franchisee partner at the cost of franchisee. The cost of maintenance will be variable and hence will be mutually agreed between vendor and franchisee. In case of ambiguity in deciding maintenance charge between franchisee and vendor, decision of MDASSIPL will be final.

Become a

# Agrotikos

## Smart Store India

### Franchisee Partner

#### FRANCHISEE BENEFITS

Promote Young Entrepreneurs

Zero Royalty & Zero Franchisee Fee

Average 10% Margin

Door step Delivery at stores

Facilitation of Mudra Loan

Range of Fastest Selling Products

Range of Best Quality Products

IT Assistance & In-Shop Branding Support

Customer Schemes & Promotional Discounts

Training & Business Skill Development

Marketing & Branding Support



#### HOW TO APPLY

1. Visit [www.graminsmartstoreindia.com](http://www.graminsmartstoreindia.com)
2. Online Registration
3. Fill Form with Complete Details
4. Successfully Registered

CUSTOMER SUPPORT CELL - **+91 9403890521**

# Agrotikos

## Smart Store India



Branch office 1.Shri Balji Tower, Railway Station Road,near  
Rawan Gate, Chomu, Rajasthan 303702

Email: [agrotikosmartstoreindia@gmail.com](mailto:agrotikosmartstoreindia@gmail.com) | Website: [www.graminsmartstoreindia.com/](http://www.graminsmartstoreindia.com/)  
[www.Graminsmartstoreindia.org.in](http://www.Graminsmartstoreindia.org.in)

Customer Support Cell - +91 9403890521